

A01

3 Bedrooms

Built areas (m²) **197,04**

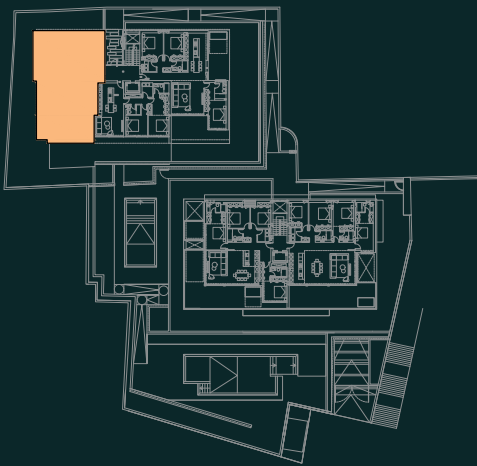
Apartment	140,15
Covered terrace	24,69
Terrace	32,20
Garden	172,35

Living areas (m²)

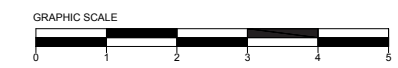
Hall	12,89
Bedroom 1	17,76
Bedroom 2	13,11
Bedroom 3	14,58
Bathroom 1	4,64
Bathroom 2	3,60
Living Kitchen	52,59
Laundry	4,10

Total living area (m²) **123,27**

* free standing furniture is not included



The surfaces indicated are calculated in accordance with Decree 218/2005 of Consumer information on the sale and rental of homes Andalusia. They are included in the calculation of the surfaces below ground. The right to include the necessary modifications due to requirements is reserved technical and/or legal by any administration or public body. All the furniture, including the one in the kitchen, is merely informative. The twists of the doors and distribution of sanitary devices are not binding. The expressed surfaces are approximate, being able to experience modifications for reasons of technical natural in the development of the execution of the works.



A02

2 Bedrooms

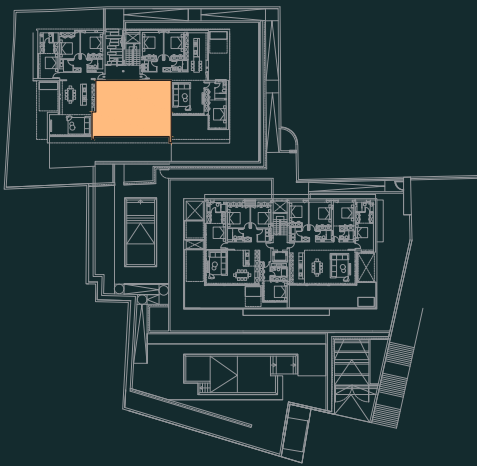
Built areas (m²) **152,89**

Apartment	95,64
Covered terrace	12,07
Terrace	45,18

Living areas (m²)

Hall	3,90
Bedroom 1	20,15
Bedroom 2	13,94
Bathroom 1	3,60
Bathroom 2	3,44
Living Kitchen	35,75
Laundry	3,95

Total living area (m²) **84,73**



The surfaces indicated are calculated in accordance with Decree 218/2005 of Consumer information on the sale and rental of homes Andalusia. They are included in the calculation of the surfaces below ground. The right to include the necessary modifications due to requirements is reserved technical and/or legal by any administration or public body. All the furniture, including the one in the kitchen, is merely informative. The twists of the doors and distribution of sanitary devices are not binding. The expressed surfaces are approximate, being able to experience modifications for reasons of technical natural in the development of the execution of the works.



A03

3 Bedrooms

Built areas (m²) **203,81**

Apartment	144,67
Covered terrace	44,73
Terrace	14,41
Garden	144,56

Living areas (m²)

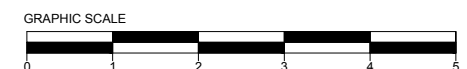
Hall 1	5,98
Hall 2	3,83
Bedroom 1	17,13
Bedroom 2	14,20
Bedroom 3	13,56
Bathroom 1	5,59
Bathroom 2	3,58
Living Kitchen	56,40
Laundry	3,22

Total living area (m²) **123,69**

* free standing furniture is not included



The surfaces indicated are calculated in accordance with Decree 218/2005 of Consumer information on the sale and rental of homes Andalusia. They are included in the calculation of the surfaces below ground. The right to include the necessary modifications due to requirements is reserved technical and/or legal by any administration or public body. All the furniture, including the one in the kitchen, is merely informative. The twists of the doors and distribution of sanitary devices are not binding. The expressed surfaces are approximate, being able to experience modifications for reasons of technical natural in the development of the execution of the works.



A11

3 Bedrooms

Built areas (m²) **221,75**

Apartment	139,95
Covered terrace	71,12
Terrace	10,68

Living areas (m²)

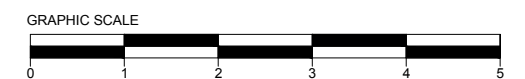
Hall	3,23
Bedroom 1	18,09
Bedroom 2	14,35
Bedroom 3	12,93
Bathroom 1	4,07
Bathroom 2	3,60
Living Kitchen	63,30
Laundry	3,21

Total living area (m²) **122,78**

* free standing furniture is not included



The surfaces indicated are calculated in accordance with Decree 218/2005 of Consumer information on the sale and rental of homes Andalusia. They are included in the calculation of the surfaces below ground. The right to include the necessary modifications due to requirements is reserved technical and/or legal by any administration or public body. All the furniture, including the one in the kitchen, is merely informative. The twists of the doors and distribution of sanitary devices are not binding. The expressed surfaces are approximate, being able to experience modifications for reasons of technical natural in the development of the execution of the works.



A12

4 Bedrooms

Built areas (m²) **245,83**

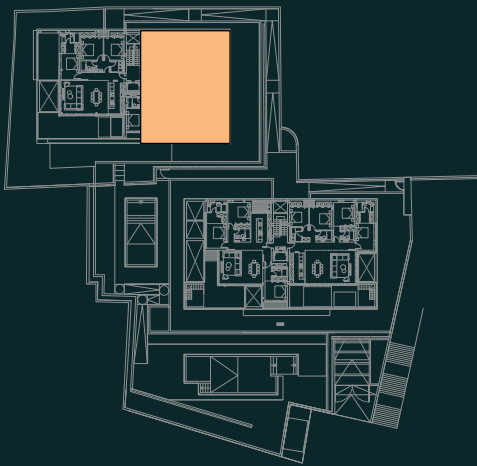
Apartment	163,06
Covered terrace	73,42
Terraza	9,35

Living areas (m²)

Hall 1	4,91
Hall 2	3,84
Bedroom 1	17,05
Bedroom 2	14,17
Bedroom 3	16,11
Bedroom 4	17,30
Bathroom 1	3,39
Bathroom 2	3,58
Bathroom 3	4,23
Living Kitchen	55,60
Laundry	3,20

Total living area (m²) **143,37**

* free standing furniture is not included



The surfaces indicated are calculated in accordance with Decree 218/2005 of Consumer information on the sale and rental of homes Andalusia. They are included in the calculation of the surfaces below ground. The right to include the necessary modifications due to requirements is reserved technical and/or legal by any administration or public body. All the furniture, including the one in the kitchen, is merely informative. The twists of the doors and distribution of sanitary devices are not binding. The expressed surfaces are approximate, being able to experience modifications for reasons of technical natural in the development of the execution of the works.



A21

4 Bedrooms

Built areas (m²) **209,86**

Apartment	164,46
Covered terrace	32,46
Terrace	12,94

Living areas (m²)

Hall 1	3,24
Hall 2	1,76
Bedroom 1	17,36
Bedroom 2	13,74
Bedroom 3	14,35
Bedroom 4	12,93
Bathroom 1	4,86
Bathroom 2	3,12
Bathroom 3	3,60
Living Kitchen	67,09
Laundry	3,20

Total living area (m²) **145,25**

* free standing furniture is not included



The surfaces indicated are calculated in accordance with Decree 218/2005 of Consumer information on the sale and rental of homes Andalusia. They are included in the calculation of the surfaces below ground. The right to include the necessary modifications due to requirements is reserved technical and/or legal by any administration or public body. All the furniture, including the one in the kitchen, is merely informative. The twists of the doors and distribution of sanitary devices are not binding. The expressed surfaces are approximate, being able to experience modifications for reasons of technical natural in the development of the execution of the works.



A21

Built areas (m²) **286,60**

Apartment	164,46
Covered terrace	32,46
Terrace	12,94
Roof terrace	76,74

Living areas (m²)

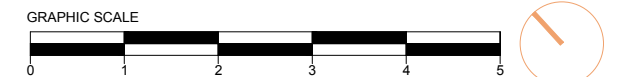
Hall 1	3,24
Hall 2	1,76
Bedroom 1	17,36
Bedroom 2	13,74
Bedroom 3	14,35
Bedroom 4	12,93
Bathroom 1	4,86
Bathroom 2	3,12
Bathroom 3	3,60
Living Kitchen	67,09
Laundry	3,20
Roof terrace	63,56

Total living area (m²) **208,81**

* free standing furniture is not included



The surfaces indicated are calculated in accordance with Decree 218/2005 of Consumer information on the sale and rental of homes Andalusia. They are included in the calculation of the surfaces below ground. The right to include the necessary modifications due to requirements is reserved technical and/or legal by any administration or public body. All the furniture, including the one in the kitchen, is merely informative. The twists of the doors and distribution of sanitary devices are not binding. The expressed surfaces are approximate, being able to experience modifications for reasons of technical natural in the development of the execution of the works.



A22

4 Bedrooms

Built areas (m²) **229,87**

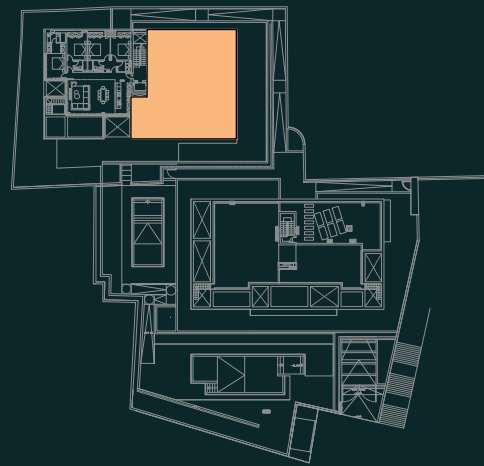
Apartment	163,06
Covered terrace	39,37
Terrace	27,44

Living areas (m²)

Hall 1	4,91
Hall 2	3,85
Bedroom 1	17,05
Bedroom 2	14,17
Bedroom 3	16,11
Bedroom 4	16,98
Bathroom 1	3,39
Bathroom 2	3,58
Bathroom 3	4,24
Living Kitchen	55,60
Laundry	3,20

Total living area (m²) **143,07**

* free standing furniture is not included



The surfaces indicated are calculated in accordance with Decree 218/2005 of Consumer information on the sale and rental of homes Andalusia. They are included in the calculation of the surfaces below ground. The right to include the necessary modifications due to requirements is reserved technical and/or legal by any administration or public body. All the furniture, including the one in the kitchen, is merely informative. The twists of the doors and distribution of sanitary devices are not binding. The expressed surfaces are approximate, being able to experience modifications for reasons of technical natural in the development of the execution of the works.



A22

Built areas (m²) **359,77**

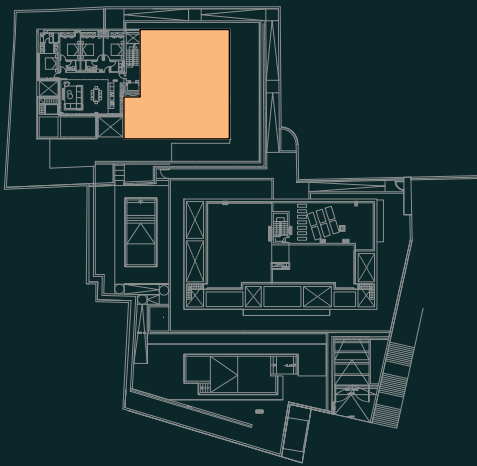
Apartment	163,06
Covered terrace	39,37
Terrace	27,44
Roof terrace	129,9

Living areas (m²)

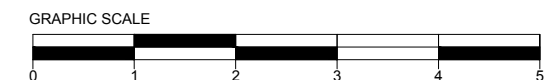
Hall 1	4,91
Hall 2	3,85
Bedroom 1	17,05
Bedroom 2	14,17
Bedroom 3	16,11
Bedroom 4	16,98
Bathroom 1	3,39
Bathroom 2	3,58
Bathroom 3	4,24
Living Kitchen	55,60
Laundry	3,20
Roof terrace	124,08

Total living area (m²) **267,15**

* free standing furniture is not included



The surfaces indicated are calculated in accordance with Decree 218/2005 of Consumer information on the sale and rental of homes Andalusia. They are included in the calculation of the surfaces below ground. The right to include the necessary modifications due to requirements is reserved technical and/or legal by any administration or public body. All the furniture, including the one in the kitchen, is merely informative. The twists of the doors and distribution of sanitary devices are not binding. The expressed surfaces are approximate, being able to experience modifications for reasons of technical natural in the development of the execution of the works.



B01

3 Bedrooms

Built areas (m ²)	195,56
Apartment	139,35
Covered terrace	46,18
Terrace	11,47
Garden	123,90

Living areas (m ²)	
Hall 1	7,55
Hall 2	4,20
Bedroom 1	15,32
Bedroom 2	12,27
Bedroom 3	13,69
Bathroom 1	4,16
Bathroom 2	4,34
Living Kitchen	55,85
Laundry	3,06
Total living area (m²)	120,45

* free standing furniture is not included



The surfaces indicated are calculated in accordance with Decree 218/2005 of Consumer information on the sale and rental of homes Andalusia. They are included in the calculation of the surfaces below ground. The right to include the necessary modifications due to requirements is reserved technical and/or legal by any administration or public body. All the furniture, including the one in the kitchen, is merely informative. The twists of the doors and distribution of sanitary devices are not binding. The expressed surfaces are approximate, being able to experience modifications for reasons of technical natural in the development of the execution of the works.



B02

2 Bedrooms

Built areas (m²)

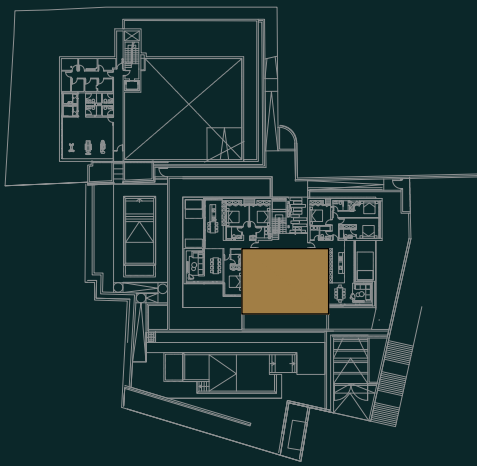
Apartment	98,02
Covered terrace	31,09
Terrace	31,32

Living areas (m²)

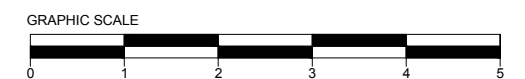
Hall	5,56
Bedroom 1	13,03
Bedroom 2	14,76
Bathroom 1	4,04
Bathroom 2	3,17
Living Kitchen	43,23
Laundry	3,26

Total living area (m²)

* free standing furniture is not included



The surfaces indicated are calculated in accordance with Decree 218/2005 of Consumer information on the sale and rental of homes Andalusia. They are included in the calculation of the surfaces below ground. The right to include the necessary modifications due to requirements is reserved technical and/or legal by any administration or public body. All the furniture, including the one in the kitchen, is merely informative. The twists of the doors and distribution of sanitary devices are not binding. The expressed surfaces are approximate, being able to experience modifications for reasons of technical natural in the development of the execution of the works.



B03

3 Bedrooms

Built areas (m²) **186,38**

Apartment	139,63
Covered terrace	9,78
Terrace	36,97
Garden	89,77

Living areas (m²)

Hall 1	3,84
Hall 2	3,41
Bedroom 1	12,15
Bedroom 2	14,96
Bedroom 3	15,56
Bathroom 1	3,27
Bathroom 2	3,71
Bathroom 3	3,64
Living Kitchen	52,61
Laundry	3,11

Total living area (m²) **116,25**

* free standing furniture is not included



The surfaces indicated are calculated in accordance with Decree 218/2005 of Consumer information on the sale and rental of homes Andalusia. They are included in the calculation of the surfaces below ground. The right to include the necessary modifications due to requirements is reserved technical and/or legal by any administration or public body. All the furniture, including the one in the kitchen, is merely informative. The twists of the doors and distribution of sanitary devices are not binding. The expressed surfaces are approximate, being able to experience modifications for reasons of technical natural in the development of the execution of the works.



B11

4 Bedrooms

Built areas (m²) **242,51**

Apartment	160,46
Covered terrace	57,18
Terrace	24,87

Living areas (m²)

Hall 1	6,06
Hall 2	4,18
Bedroom 1	18,43
Bedroom 2	13,65
Bedroom 3	12,27
Bedroom 4	18,90
Bathroom 1	4,64
Bathroom 2	4,22
Bathroom 3	3,59
Living Kitchen	51,34
Laundry	3,51

Total living area (m²) **140,79**

* free standing furniture is not included



The surfaces indicated are calculated in accordance with Decree 218/2005 of Consumer information on the sale and rental of homes Andalusia. They are included in the calculation of the surfaces below ground. The right to include the necessary modifications due to requirements is reserved technical and/or legal by any administration or public body. All the furniture, including the one in the kitchen, is merely informative. The twists of the doors and distribution of sanitary devices are not binding. The expressed surfaces are approximate, being able to experience modifications for reasons of technical natural in the development of the execution of the works.



B12

4 Bedrooms

Built areas (m²) **221,43**

Apartment 170,92
Covered terrace 50,51

Living areas (m²)

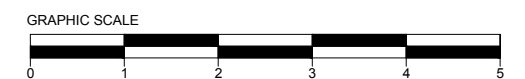
Hall 3,60
Bedroom 1 17,36
Bedroom 2 16,25
Bedroom 3 15,53
Bedroom 4 12,28
Bathroom 1 4,26
Bathroom 2 2,85
Bathroom 3 3,48
Living | Kitchen 69,92
Laundry 3,57

Total living area (m²) **149,10**

* free standing furniture is not included



The surfaces indicated are calculated in accordance with Decree 218/2005 of Consumer information on the sale and rental of homes Andalusia. They are included in the calculation of the surfaces below ground. The right to include the necessary modifications due to requirements is reserved technical and/or legal by any administration or public body. All the furniture, including the one in the kitchen, is merely informative. The twists of the doors and distribution of sanitary devices are not binding. The expressed surfaces are approximate, being able to experience modifications for reasons of technical natural in the development of the execution of the works.



B21

3 Bedrooms

Built areas (m²) **328,17**

Apartment	145,33
Covered terrace	46,88
Terraces	6,14
Terrace	19,53
Roof terrace	129,82

Living areas (m²)

Hall	2,09
Bedroom 1	18,04
Bedroom 2	14,49
Bedroom 3	15,79
Bathroom 1	4,64
Bathroom 2	3,60
Bathroom 3	3,35
Living Kitchen	63,65
Laundry	6,11
Roof terrace	128,81

Total living area (m²) **274,06**

* free standing furniture is not included



The surfaces indicated are calculated in accordance with Decree 218/2005 of Consumer information on the sale and rental of homes Andalusia. They are included in the calculation of the surfaces below ground. The right to include the necessary modifications due to requirements is reserved technical and/or legal by any administration or public body. All the furniture, including the one in the kitchen, is merely informative. The twists of the doors and distribution of sanitary devices are not binding. The expressed surfaces are approximate, being able to experience modifications for reasons of technical natural in the development of the execution of the works.



B21

Built areas (m²) **326,35**

Apartment	145,33
Covered terrace	51,20
Terraces	129,82

Living areas (m²)

Hall	2,09
Bedroom 1	18,04
Bedroom 2	14,49
Bedroom 3	15,79
Bathroom 1	4,64
Bathroom 2	3,60
Bathroom 3	3,35
Living Kitchen	63,65
Laundry	6,11

Total living area (m²) **131,76**



The surfaces indicated are calculated in accordance with Decree 218/2005 of Consumer information on the sale and rental of homes Andalusia. They are included in the calculation of the surfaces below ground. The right to include the necessary modifications due to requirements is reserved technical and/or legal by any administration or public body. All the furniture, including the one in the kitchen, is merely informative. The twists of the doors and distribution of sanitary devices are not binding. The expressed surfaces are approximate, being able to experience modifications for reasons of technical natural in the development of the execution of the works.



B22

4 Bedrooms

Built areas (m²) **298,88**

Apartment	169,22
Covered terrace	36,4
Terraces	19,72
Roof terrace	73,54

Living areas (m²)

Hall	3,60
Bedroom 1	18,39
Bedroom 2	16,53
Bedroom 3	14,61
Bedroom 4	11,45
Bathroom 1	4,26
Bathroom 2	2,85
Bathroom 3	3,48
Living Kitchen	69,92
Laundry	3,57
Roof terrace	68,93

Total living area (m²) **214,18**

* free standing furniture is not included



The surfaces indicated are calculated in accordance with Decree 218/2005 of Consumer information on the sale and rental of homes Andalusia. They are included in the calculation of the surfaces below ground. The right to include the necessary modifications due to requirements is reserved technical and/or legal by any administration or public body. All the furniture, including the one in the kitchen, is merely informative. The twists of the doors and distribution of sanitary devices are not binding. The expressed surfaces are approximate, being able to experience modifications for reasons of technical natural in the development of the execution of the works.



B22

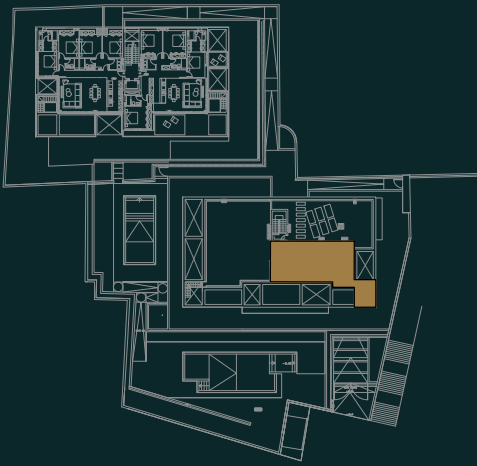
Built areas (m²) **221,09**

Apartment	169,22
Covered terrace	51,87
Terraces	73,54

Living areas (m²)

Hall	3,60
Bedroom 1	18,39
Bedroom 2	16,53
Bedroom 3	14,61
Bedroom 4	11,45
Bathroom 1	4,26
Bathroom 2	2,85
Bathroom 3	3,48
Living Kitchen	69,92
Laundry	3,57

Total living area (m²) **148,66**



The surfaces indicated are calculated in accordance with Decree 218/2005 of Consumer information on the sale and rental of homes Andalusia. They are included in the calculation of the surfaces below ground. The right to include the necessary modifications due to requirements is reserved technical and/or legal by any administration or public body. All the furniture, including the one in the kitchen, is merely informative. The twists of the doors and distribution of sanitary devices are not binding. The expressed surfaces are approximate, being able to experience modifications for reasons of technical natural in the development of the execution of the works.

