

A01

3 Bedrooms

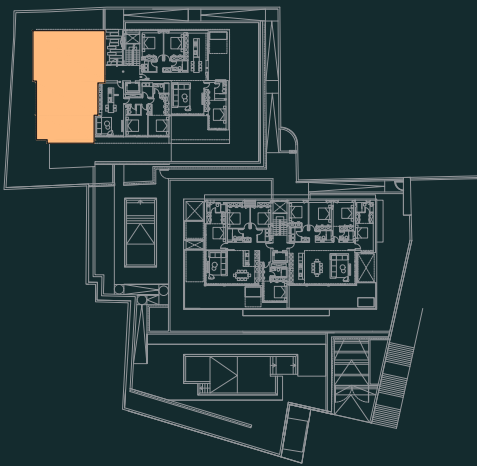
Built areas (m²) **197,04**

Apartment	140,15
Covered terrace	24,69
Terrace	32,20
Garden	172,35

Living areas (m²)

Hall	12,89
Bedroom 1	17,76
Bedroom 2	13,11
Bedroom 3	14,58
Bathroom 1	4,64
Bathroom 2	3,60
Living Kitchen	52,59
Laundry	4,10

Total living area (m²) **123,27**



The surfaces indicated are calculated in accordance with Decree 218/2005 of Consumer information on the sale and rental of homes Andalusia. They are included in the calculation of the surfaces below ground. The right to include the necessary modifications due to requirements is reserved technical and/or legal by any administration or public body. All the furniture, including the one in the kitchen, is merely informative. The twists of the doors and distribution of sanitary devices are not binding. The expressed surfaces are approximate, being able to experience modifications for reasons of technical natural in the development of the execution of the works.

GRAPHIC SCALE



A01

3 Bedrooms

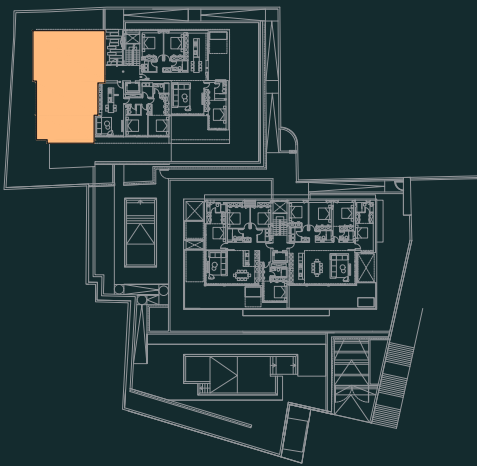
Built areas (m²) **197,04**

Apartment	140,15
Covered terrace	24,69
Terrace	32,20
Garden	172,35

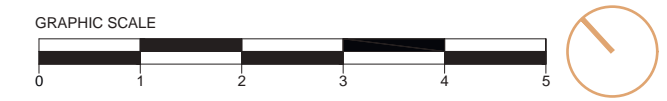
Living areas (m²)

Hall	12,89
Bedroom 1	17,76
Bedroom 2	13,11
Bedroom 3	14,58
Bathroom 1	4,64
Bathroom 2	3,60
Living Kitchen	52,59
Laundry	4,10

Total living area (m²) **123,27**



The surfaces indicated are calculated in accordance with Decree 218/2005 of Consumer information on the sale and rental of homes Andalusia. They are included in the calculation of the surfaces below ground. The right to include the necessary modifications due to requirements is reserved technical and/or legal by any administration or public body. All the furniture, including the one in the kitchen, is merely informative. The twists of the doors and distribution of sanitary devices are not binding. The expressed surfaces are approximate, being able to experience modifications for reasons of technical natural in the development of the execution of the works.



A02

2 Bedrooms

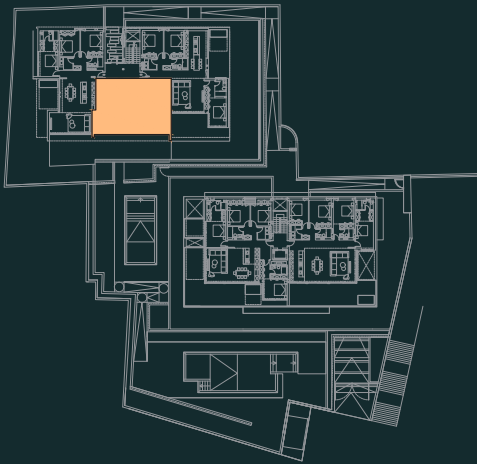
Built areas (m²) **152,89**

Apartment	95,64
Covered terrace	12,07
Terrace	45,18

Living areas (m²)

Hall	3,90
Bedroom 1	20,15
Bedroom 2	13,94
Bathroom 1	3,60
Bathroom 2	3,44
Living Kitchen	35,75
Laundry	3,95

Total living area (m²) **84,73**



The surfaces indicated are calculated in accordance with Decree 218/2005 of Consumer information on the sale and rental of homes Andalusia. They are included in the calculation of the surfaces below ground. The right to include the necessary modifications due to requirements is reserved technical and/or legal by any administration or public body. All the furniture, including the one in the kitchen, is merely informative. The twists of the doors and distribution of sanitary devices are not binding. The expressed surfaces are approximate, being able to experience modifications for reasons of technical natural in the development of the execution of the works.

GRAPHIC SCALE



A03

3 Bedrooms

Built areas (m²) **204,27**

Apartment	144,67
Covered terrace	54,08
Garden	144,56
Terrace	5,52

Living areas (m²)

Hall 1	5,98
Hall 2	3,83
Bedroom 1	18,58
Bedroom 2	14,20
Bedroom 3	13,56
Bathroom 1	4,35
Bathroom 2	3,58
Living Kitchen	56,40
Laundry	3,22

Total living area (m²) **123,69**



The surfaces indicated are calculated in accordance with Decree 218/2005 of Consumer information on the sale and rental of homes Andalusia. They are included in the calculation of the surfaces below ground. The right to include the necessary modifications due to requirements is reserved technical and/or legal by any administration or public body. All the furniture, including the one in the kitchen, is merely informative. The twists of the doors and distribution of sanitary devices are not binding. The expressed surfaces are approximate, being able to experience modifications for reasons of technical natural in the development of the execution of the works.



A03

3 Bedrooms

Built areas (m²) **204,27**

Apartment	144,67
Covered terrace	54,08
Garden	144,56
Terrace	5,52

Living areas (m²)

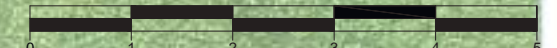
Hall 1	5,98
Hall 2	3,83
Bedroom 1	18,58
Bedroom 2	14,20
Bedroom 3	13,56
Bathroom 1	4,35
Bathroom 2	3,58
Living Kitchen	56,40
Laundry	3,22

Total living area (m²) **123,69**



The surfaces indicated are calculated in accordance with Decree 218/2005 of Consumer information on the sale and rental of homes Andalusia. They are included in the calculation of the surfaces below ground. The right to include the necessary modifications due to requirements is reserved technical and/or legal by any administration or public body. All the furniture, including the one in the kitchen, is merely informative. The twists of the doors and distribution of sanitary devices are not binding. The expressed surfaces are approximate, being able to experience modifications for reasons of technical natural in the development of the execution of the works.

GRAPHIC SCALE



A11

3 Bedrooms

Built areas (m²) **221,75**

Apartment 139,95
Covered terrace 81,80

Living areas (m²)

Hall 3,23
Bedroom 1 18,09
Bedroom 2 14,35
Bedroom 3 12,93
Bathroom 1 4,07
Bathroom 2 3,60
Living | Kitchen 63,30
Laundry 3,21

Total living area (m²) **122,78**



The surfaces indicated are calculated in accordance with Decree 218/2005 of Consumer information on the sale and rental of homes Andalusia. They are included in the calculation of the surfaces below ground. The right to include the necessary modifications due to requirements is reserved technical and/or legal by any administration or public body. All the furniture, including the one in the kitchen, is merely informative. The twists of the doors and distribution of sanitary devices are not binding. The expressed surfaces are approximate, being able to experience modifications for reasons of technical natural in the development of the execution of the works.



A12

4 Bedrooms

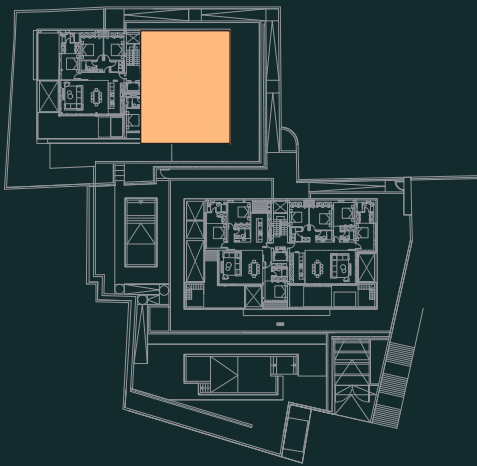
Built areas (m²) **240,50**

Apartment 163,06
Covered terrace 77,44

Living areas (m²)

Hall 1 4,91
Hall 2 3,84
Bedroom 1 17,05
Bedroom 2 14,17
Bedroom 3 16,11
Bedroom 4 17,30
Bathroom 1 3,39
Bathroom 2 3,58
Bathroom 3 4,23
Living | Kitchen 55,60
Laundry 3,20

Total living area (m²) **143,37**



The surfaces indicated are calculated in accordance with Decree 218/2005 of Consumer information on the sale and rental of homes Andalusia. They are included in the calculation of the surfaces below ground. The right to include the necessary modifications due to requirements is reserved technical and/or legal by any administration or public body. All the furniture, including the one in the kitchen, is merely informative. The twists of the doors and distribution of sanitary devices are not binding. The expressed surfaces are approximate, being able to experience modifications for reasons of technical natural in the development of the execution of the works.



A21

Built areas (m²) **283,35**

Apartment	164,46
Covered terrace	43,33
Terrace	75,56

Living areas (m²)

Hall 1	3,24
Hall 2	1,76
Bedroom 1	17,36
Bedroom 2	13,74
Bedroom 3	14,35
Bedroom 4	12,93
Bathroom 1	4,86
Bathroom 2	3,12
Bathroom 3	3,60
Living Kitchen	67,09
Laundry	3,20

Total living area (m²) **145,25**



The surfaces indicated are calculated in accordance with Decree 218/2005 of Consumer information on the sale and rental of homes Andalusia. They are included in the calculation of the surfaces below ground. The right to include the necessary modifications due to requirements is reserved technical and/or legal by any administration or public body. All the furniture, including the one in the kitchen, is merely informative. The twists of the doors and distribution of sanitary devices are not binding. The expressed surfaces are approximate, being able to experience modifications for reasons of technical natural in the development of the execution of the works.



A21

4 Bedrooms

Built areas (m²) **283,35**

Apartment	164,46
Covered terrace	43,33
Terrace	75,56

Living areas (m²)

Hall 1	3,24
Hall 2	1,76
Bedroom 1	17,36
Bedroom 2	13,74
Bedroom 3	14,35
Bedroom 4	12,93
Bathroom 1	4,86
Bathroom 2	3,12
Bathroom 3	3,60
Living Kitchen	67,09
Laundry	3,20

Total living area (m²) **145,25**



The surfaces indicated are calculated in accordance with Decree 218/2005 of Consumer information on the sale and rental of homes Andalusia. They are included in the calculation of the surfaces below ground. The right to include the necessary modifications due to requirements is reserved technical and/or legal by any administration or public body. All the furniture, including the one in the kitchen, is merely informative. The twists of the doors and distribution of sanitary devices are not binding. The expressed surfaces are approximate, being able to experience modifications for reasons of technical natural in the development of the execution of the works.

GRAPHIC SCALE



A22

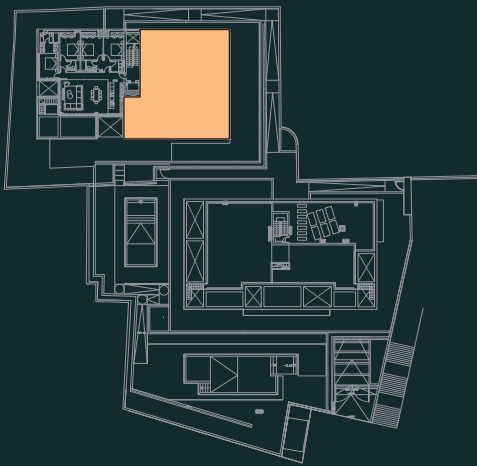
Built areas (m²) **358,89**

Apartment	163,06
Covered terrace	65,93
Terrace	129,90

Living areas (m²)

Hall 1	4,91
Hall 2	3,85
Bedroom 1	17,05
Bedroom 2	14,17
Bedroom 3	16,11
Bedroom 4	16,98
Bathroom 1	3,39
Bathroom 2	3,58
Bathroom 3	4,24
Living Kitchen	55,60
Laundry	3,20

Total living area (m²) **143,07**



The surfaces indicated are calculated in accordance with Decree 218/2005 of Consumer information on the sale and rental of homes Andalusia. They are included in the calculation of the surfaces below ground. The right to include the necessary modifications due to requirements is reserved technical and/or legal by any administration or public body. All the furniture, including the one in the kitchen, is merely informative. The twists of the doors and distribution of sanitary devices are not binding. The expressed surfaces are approximate, being able to experience modifications for reasons of technical natural in the development of the execution of the works.



A22

4 Bedrooms

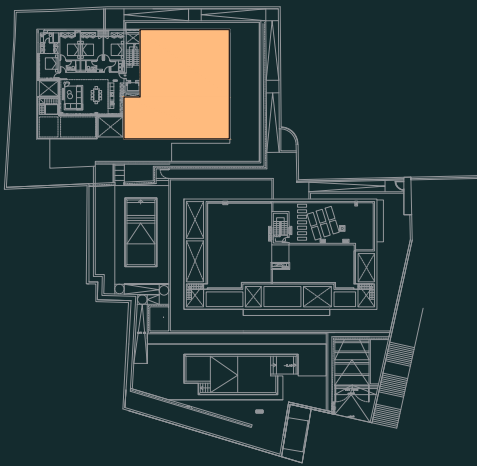
Built areas (m²) **358,89**

Apartment	163,06
Covered terrace	65,93
Terrace	129,90

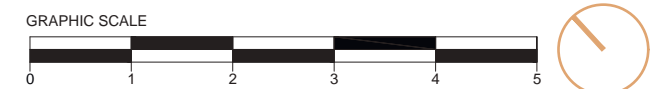
Living areas (m²)

Hall 1	4,91
Hall 2	3,85
Bedroom 1	17,05
Bedroom 2	14,17
Bedroom 3	16,11
Bedroom 4	16,98
Bathroom 1	3,39
Bathroom 2	3,58
Bathroom 3	4,24
Living Kitchen	55,60
Laundry	3,20

Total living area (m²) **143,07**



The surfaces indicated are calculated in accordance with Decree 218/2005 of Consumer information on the sale and rental of homes Andalusia. They are included in the calculation of the surfaces below ground. The right to include the necessary modifications due to requirements is reserved technical and/or legal by any administration or public body. All the furniture, including the one in the kitchen, is merely informative. The twists of the doors and distribution of sanitary devices are not binding. The expressed surfaces are approximate, being able to experience modifications for reasons of technical natural in the development of the execution of the works.



B01

3 Bedrooms

Built areas (m²) **195,56**

Apartment	139,35
Covered terrace	56,21
Garden	123,90

Living areas (m²)

Hall 1	7,55
Hall 2	4,20
Bedroom 1	15,32
Bedroom 2	12,27
Bedroom 3	13,69
Bathroom 1	4,16
Bathroom 2	4,34
Living Kitchen	55,85
Laundry	3,06

Total living area (m²) **120,45**



The surfaces indicated are calculated in accordance with Decree 218/2005 of Consumer information on the sale and rental of homes Andalusia. They are included in the calculation of the surfaces below ground. The right to include the necessary modifications due to requirements is reserved technical and/or legal by any administration or public body. All the furniture, including the one in the kitchen, is merely informative. The twists of the doors and distribution of sanitary devices are not binding. The expressed surfaces are approximate, being able to experience modifications for reasons of technical natural in the development of the execution of the works.

GRAPHIC SCALE



B01

3 Bedrooms

Built areas (m²) **195,56**

Apartment	139,35
Covered terrace	56,21
Garden	123,90

Living areas (m²)

Hall 1	7,55
Hall 2	4,20
Bedroom 1	15,32
Bedroom 2	12,27
Bedroom 3	13,69
Bathroom 1	4,16
Bathroom 2	4,34
Living Kitchen	55,85
Laundry	3,06

Total living area (m²) **120,45**



The surfaces indicated are calculated in accordance with Decree 218/2005 of Consumer information on the sale and rental of homes Andalusia. They are included in the calculation of the surfaces below ground. The right to include the necessary modifications due to requirements is reserved technical and/or legal by any administration or public body. All the furniture, including the one in the kitchen, is merely informative. The twists of the doors and distribution of sanitary devices are not binding. The expressed surfaces are approximate, being able to experience modifications for reasons of technical natural in the development of the execution of the works.

GRAPHIC SCALE



B02

2 Bedrooms

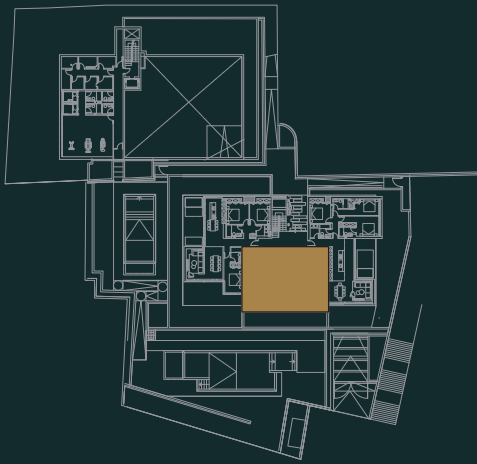
Built areas (m²) **129,11**

Apartment	98,02
Covered terrace	31,09
Terrace	31,32

Living areas (m²)

Hall	5,56
Bedroom 1	13,03
Bedroom 2	14,76
Bathroom 1	4,04
Bathroom 2	3,17
Living Kitchen	43,23
Laundry	3,26

Total living area (m²) **87,05**



The surfaces indicated are calculated in accordance with Decree 218/2005 of Consumer information on the sale and rental of homes Andalusia. They are included in the calculation of the surfaces below ground. The right to include the necessary modifications due to requirements is reserved technical and/or legal by any administration or public body. All the furniture, including the one in the kitchen, is merely informative. The twists of the doors and distribution of sanitary devices are not binding. The expressed surfaces are approximate, being able to experience modifications for reasons of technical natural in the development of the execution of the works.

GRAPHIC SCALE



B03

3 Bedrooms

Built areas (m²) **185,70**

Apartment	139,63
Covered terrace	20,32
Terrace	25,75
Garden	89,77

Living areas (m²)

Hall 1	3,84
Hall 2	3,41
Bedroom 1	12,15
Bedroom 2	14,96
Bedroom 3	15,56
Bathroom 1	3,27
Bathroom 2	3,71
Bathroom 3	3,64
Living Kitchen	52,61
Laundry	3,11

Total living area (m²) **116,25**



The surfaces indicated are calculated in accordance with Decree 218/2005 of Consumer information on the sale and rental of homes Andalusia. They are included in the calculation of the surfaces below ground. The right to include the necessary modifications due to requirements is reserved technical and/or legal by any administration or public body. All the furniture, including the one in the kitchen, is merely informative. The twists of the doors and distribution of sanitary devices are not binding. The expressed surfaces are approximate, being able to experience modifications for reasons of technical natural in the development of the execution of the works.



B03

3 Bedrooms

Built areas (m²) **185,70**

Apartment	139,63
Covered terrace	20,32
Terrace	25,75
Garden	89,77

Living areas (m²)

Hall 1	3,84
Hall 2	3,41
Bedroom 1	12,15
Bedroom 2	14,96
Bedroom 3	15,56
Bathroom 1	3,27
Bathroom 2	3,71
Bathroom 3	3,64
Living Kitchen	52,61
Laundry	3,11

Total living area (m²) **116,25**



The surfaces indicated are calculated in accordance with Decree 218/2005 of Consumer information on the sale and rental of homes Andalusia. They are included in the calculation of the surfaces below ground. The right to include the necessary modifications due to requirements is reserved technical and/or legal by any administration or public body. All the furniture, including the one in the kitchen, is merely informative. The twists of the doors and distribution of sanitary devices are not binding. The expressed surfaces are approximate, being able to experience modifications for reasons of technical natural in the development of the execution of the works.

GRAPHIC SCALE



B11

4 Bedrooms

Built areas (m²) **233,84**

Apartment 160,46
Covered terrace 73,38

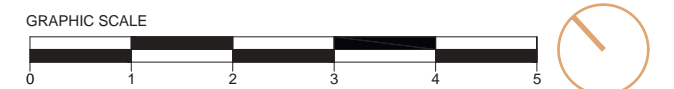
Living areas (m²)

Hall 1 6,06
Hall 2 4,18
Bedroom 1 18,43
Bedroom 2 13,65
Bedroom 3 12,27
Bedroom 4 18,90
Bathroom 1 4,64
Bathroom 2 4,22
Bathroom 3 3,59
Living | Kitchen 51,34
Laundry 3,51

Total living area (m²) **140,79**



The surfaces indicated are calculated in accordance with Decree 218/2005 of Consumer information on the sale and rental of homes Andalusia. They are included in the calculation of the surfaces below ground. The right to include the necessary modifications due to requirements is reserved technical and/or legal by any administration or public body. All the furniture, including the one in the kitchen, is merely informative. The twists of the doors and distribution of sanitary devices are not binding. The expressed surfaces are approximate, being able to experience modifications for reasons of technical natural in the development of the execution of the works.



B12

4 Bedrooms

Built areas (m²) **221,43**

Apartment 170,92
Covered terrace 50,51

Living areas (m²)

Hall 3,60
Bedroom 1 17,36
Bedroom 2 16,25
Bedroom 3 15,53
Bedroom 4 12,28
Bathroom 1 4,26
Bathroom 2 2,85
Bathroom 3 3,48
Living | Kitchen 69,92
Laundry 3,57

Total living area (m²) **149,10**



The surfaces indicated are calculated in accordance with Decree 218/2005 of Consumer information on the sale and rental of homes Andalusia. They are included in the calculation of the surfaces below ground. The right to include the necessary modifications due to requirements is reserved technical and/or legal by any administration or public body. All the furniture, including the one in the kitchen, is merely informative. The twists of the doors and distribution of sanitary devices are not binding. The expressed surfaces are approximate, being able to experience modifications for reasons of technical natural in the development of the execution of the works.

GRAPHIC SCALE



B21

Built areas (m²) **326,35**

Apartment	145,33
Covered terrace	51,20
Terraces	129,82

Living areas (m²)

Hall	2,09
Bedroom 1	18,04
Bedroom 2	14,49
Bedroom 3	15,79
Bathroom 1	4,64
Bathroom 2	3,60
Bathroom 3	3,35
Living Kitchen	63,65
Laundry	6,11

Total living area (m²) **131,76**



The surfaces indicated are calculated in accordance with Decree 218/2005 of Consumer information on the sale and rental of homes Andalusia. They are included in the calculation of the surfaces below ground. The right to include the necessary modifications due to requirements is reserved technical and/or legal by any administration or public body. All the furniture, including the one in the kitchen, is merely informative. The twists of the doors and distribution of sanitary devices are not binding. The expressed surfaces are approximate, being able to experience modifications for reasons of technical natural in the development of the execution of the works.



B21

3 Bedrooms

Built areas (m²) **326,35**

Apartment	145,33
Covered terrace	51,20
Terraces	129,82

Living areas (m²)

Hall	2,09
Bedroom 1	18,04
Bedroom 2	14,49
Bedroom 3	15,79
Bathroom 1	4,64
Bathroom 2	3,60
Bathroom 3	3,35
Living Kitchen	63,65
Laundry	6,11

Total living area (m²) **131,76**



The surfaces indicated are calculated in accordance with Decree 218/2005 of Consumer information on the sale and rental of homes Andalusia. They are included in the calculation of the surfaces below ground. The right to include the necessary modifications due to requirements is reserved technical and/or legal by any administration or public body. All the furniture, including the one in the kitchen, is merely informative. The twists of the doors and distribution of sanitary devices are not binding. The expressed surfaces are approximate, being able to experience modifications for reasons of technical natural in the development of the execution of the works.

GRAPHIC SCALE



B22

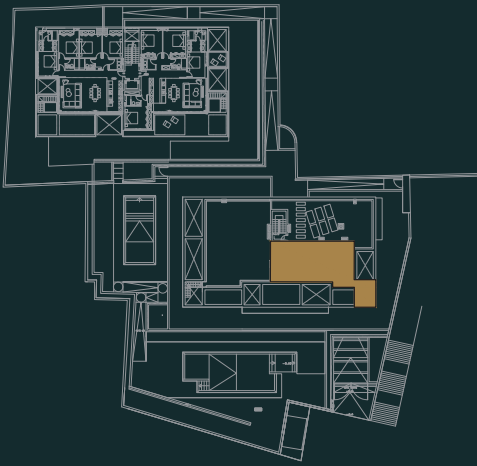
Built areas (m²) **221,09**

Apartment	169,22
Covered terrace	51,87
Terraces	73,54

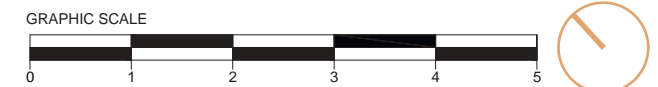
Living areas (m²)

Hall	3,60
Bedroom 1	18,39
Bedroom 2	16,53
Bedroom 3	14,61
Bedroom 4	11,45
Bathroom 1	4,26
Bathroom 2	2,85
Bathroom 3	3,48
Living Kitchen	69,92
Laundry	3,57

Total living area (m²) **148,66**



The surfaces indicated are calculated in accordance with Decree 218/2005 of Consumer information on the sale and rental of homes Andalusia. They are included in the calculation of the surfaces below ground. The right to include the necessary modifications due to requirements is reserved technical and/or legal by any administration or public body. All the furniture, including the one in the kitchen, is merely informative. The twists of the doors and distribution of sanitary devices are not binding. The expressed surfaces are approximate, being able to experience modifications for reasons of technical natural in the development of the execution of the works.



B22

4 Bedrooms

Built areas (m²) **221,09**

Apartment	169,22
Covered terrace	51,87
Terraces	73,54

Living areas (m²)

Hall	3,60
Bedroom 1	18,39
Bedroom 2	16,53
Bedroom 3	14,61
Bedroom 4	11,45
Bathroom 1	4,26
Bathroom 2	2,85
Bathroom 3	3,48
Living Kitchen	69,92
Laundry	3,57

Total living area (m²) **148,66**



The surfaces indicated are calculated in accordance with Decree 218/2005 of Consumer information on the sale and rental of homes Andalusia. They are included in the calculation of the surfaces below ground. The right to include the necessary modifications due to requirements is reserved technical and/or legal by any administration or public body. All the furniture, including the one in the kitchen, is merely informative. The twists of the doors and distribution of sanitary devices are not binding. The expressed surfaces are approximate, being able to experience modifications for reasons of technical natural in the development of the execution of the works.

GRAPHIC SCALE

